



AC1200 Wi-Fi Router

Full Gigabit & Dual Band

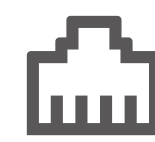
Archer A6



867Mbps 5GHz +
450Mbps 2.4GHz



Faster Wi-Fi
with MU-MIMO

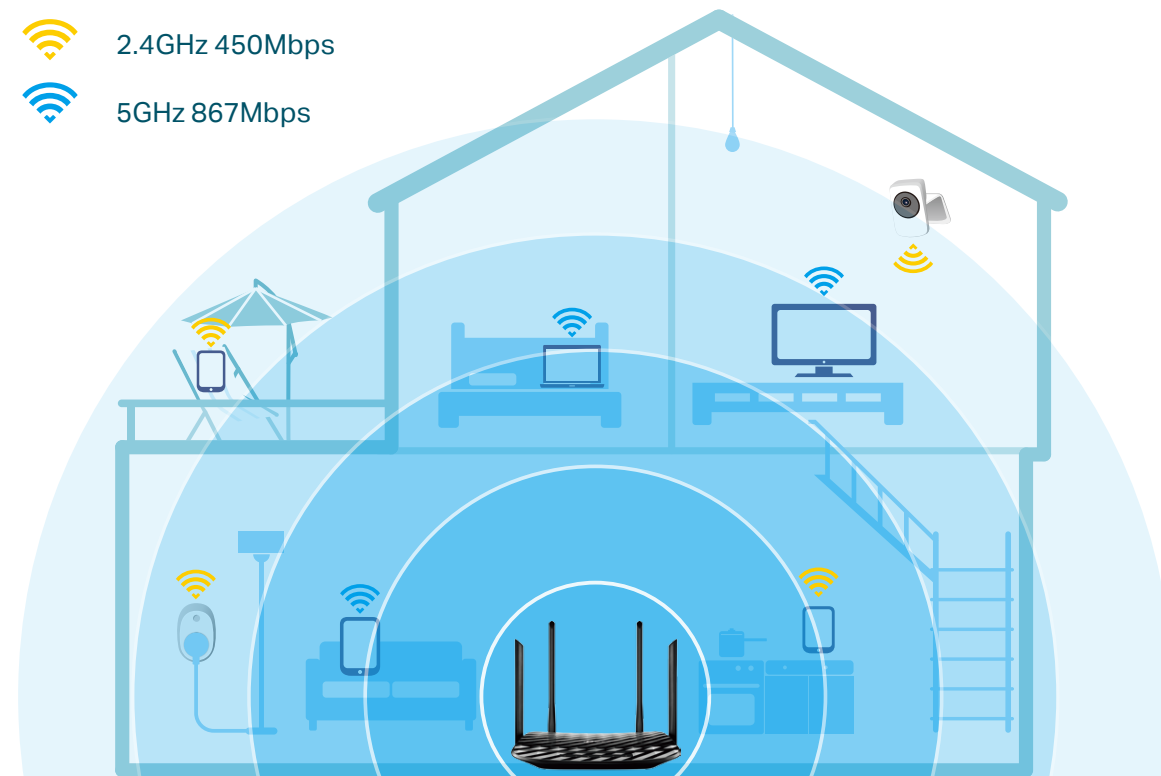


Full Gigabit
Ports

Highlights

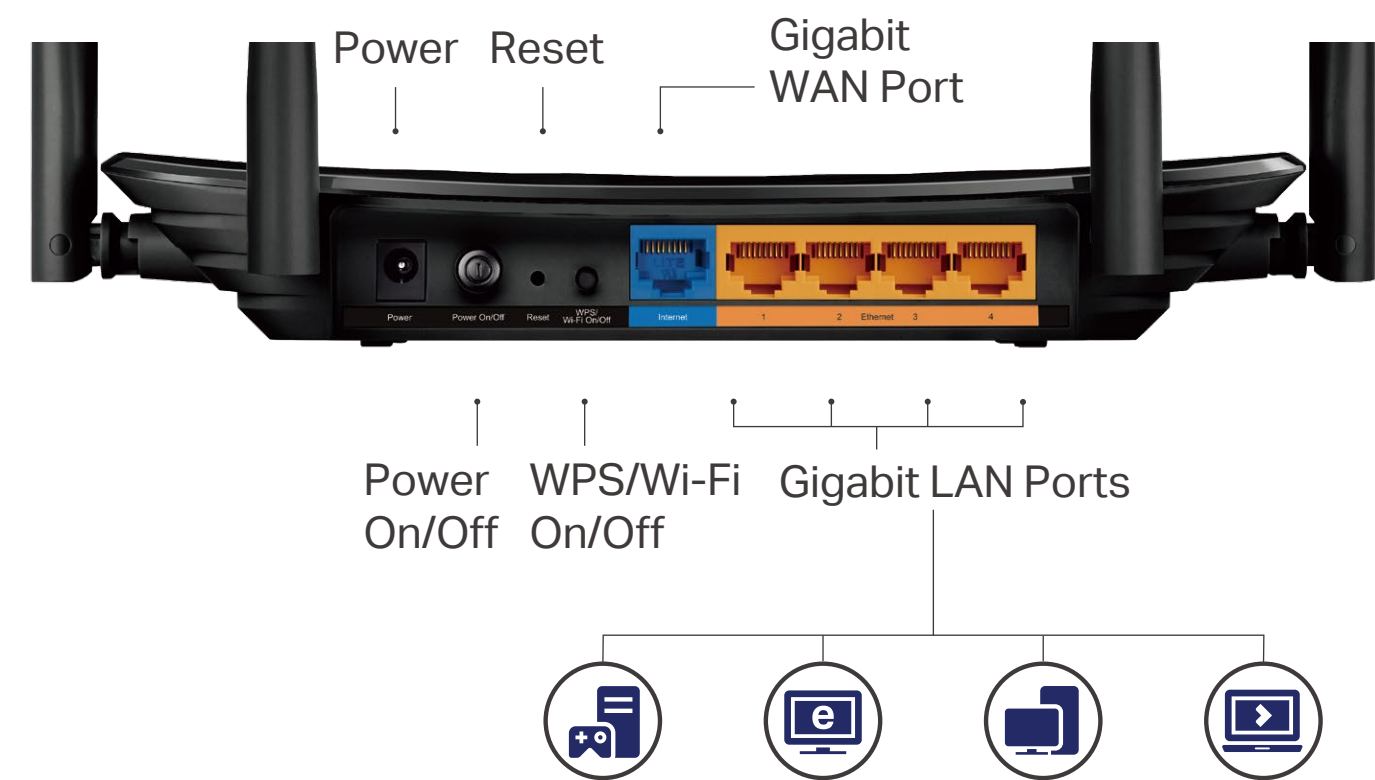
Household Wi-Fi at Streaming Speeds

Press play and forget about buffering with the Archer A6. Thanks to high-speed dual Wi-Fi bands, you can run more of your devices at the same time without interruption. The strong 2.4GHz (450Mbps) Wi-Fi band is perfect for sending emails, browsing the web, and listening to music. The crystal 5GHz Wi-Fi band reaches 867Mbps so you can game online and stream in HD simultaneously.



10× Faster Connectivity

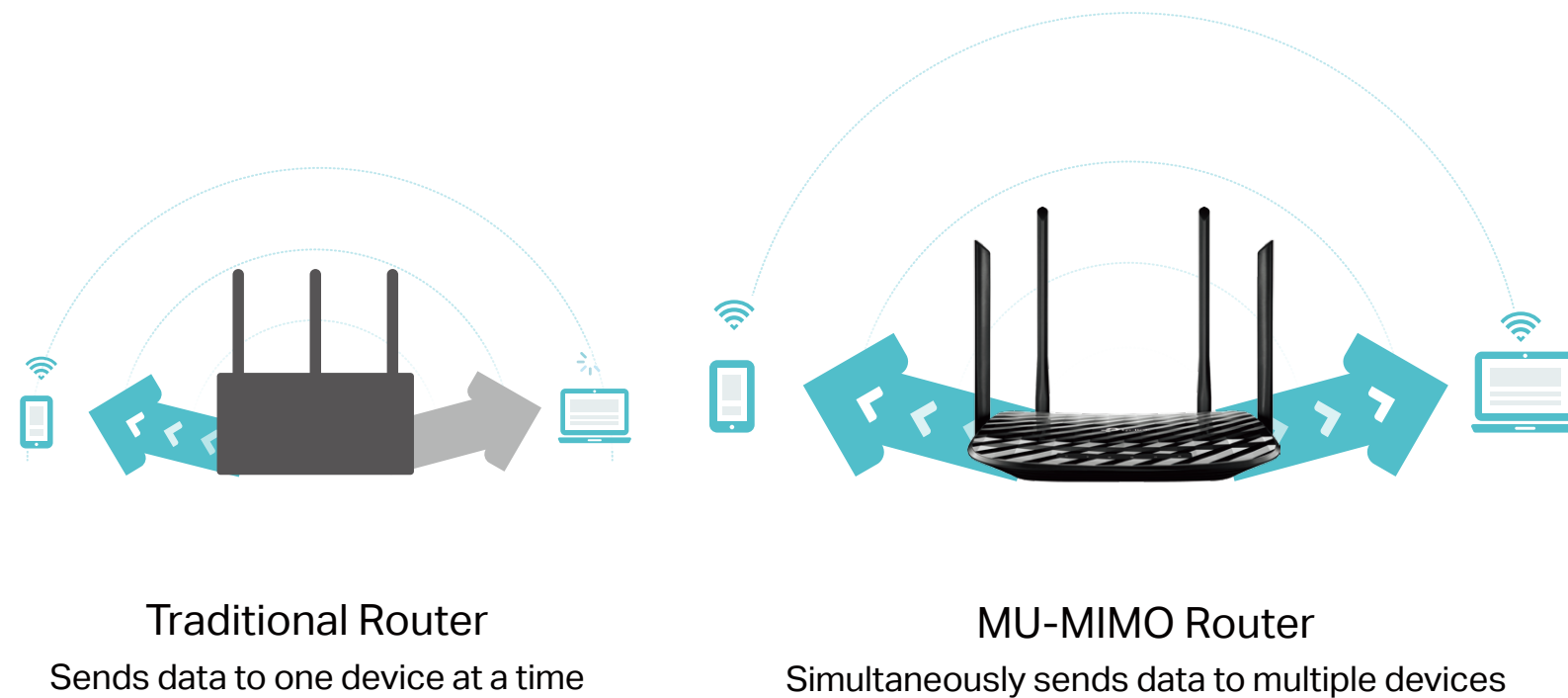
One Gigabit WAN port and four Gigabit LAN ports deliver speeds up to 10× faster than standard Ethernet connections. Let every member of your family simultaneously enjoy high-speed network on their phones, tablets and laptops.



Highlights

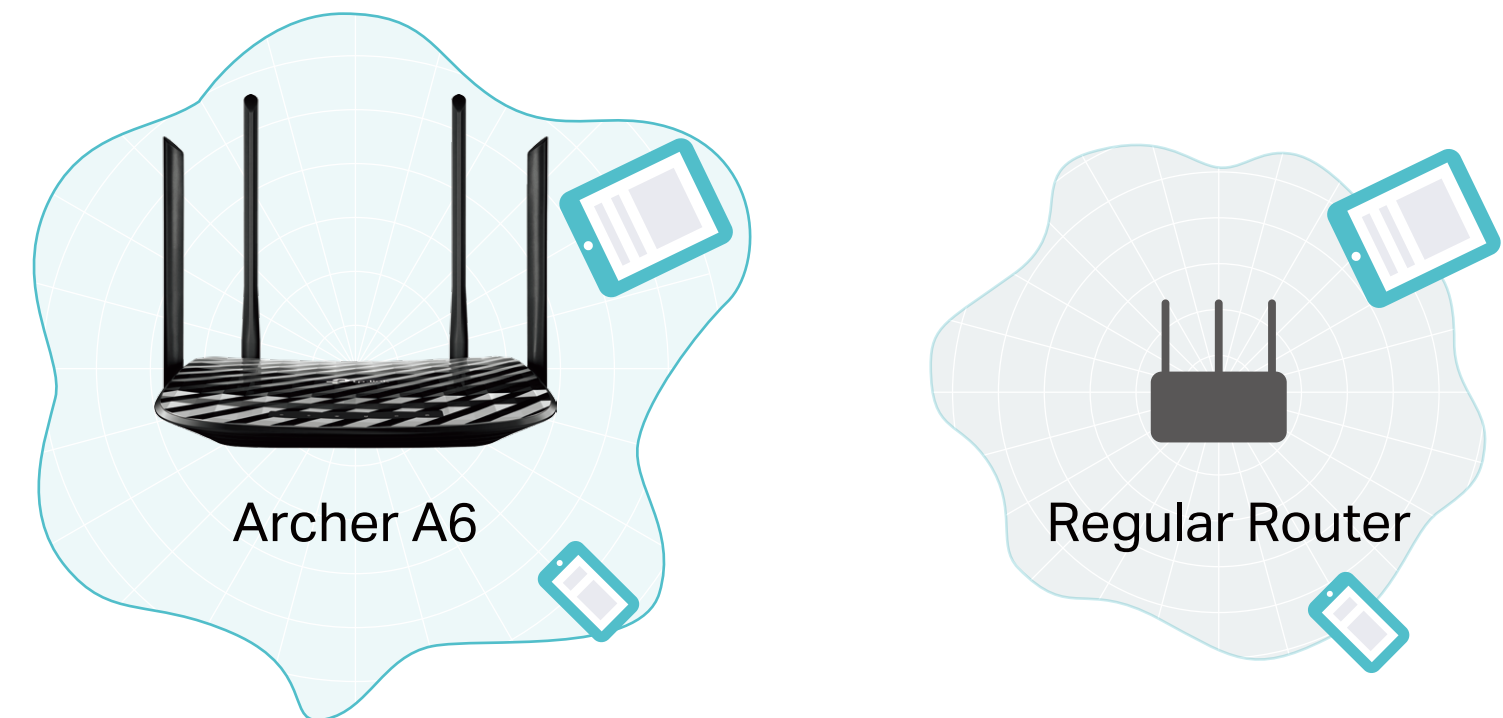
MU-MIMO for 2x Faster Connections

MU-MIMO technology simultaneously transfers data to multiple devices at once, reducing wait time, increasing Wi-Fi throughput for every device and making each stream more efficient.

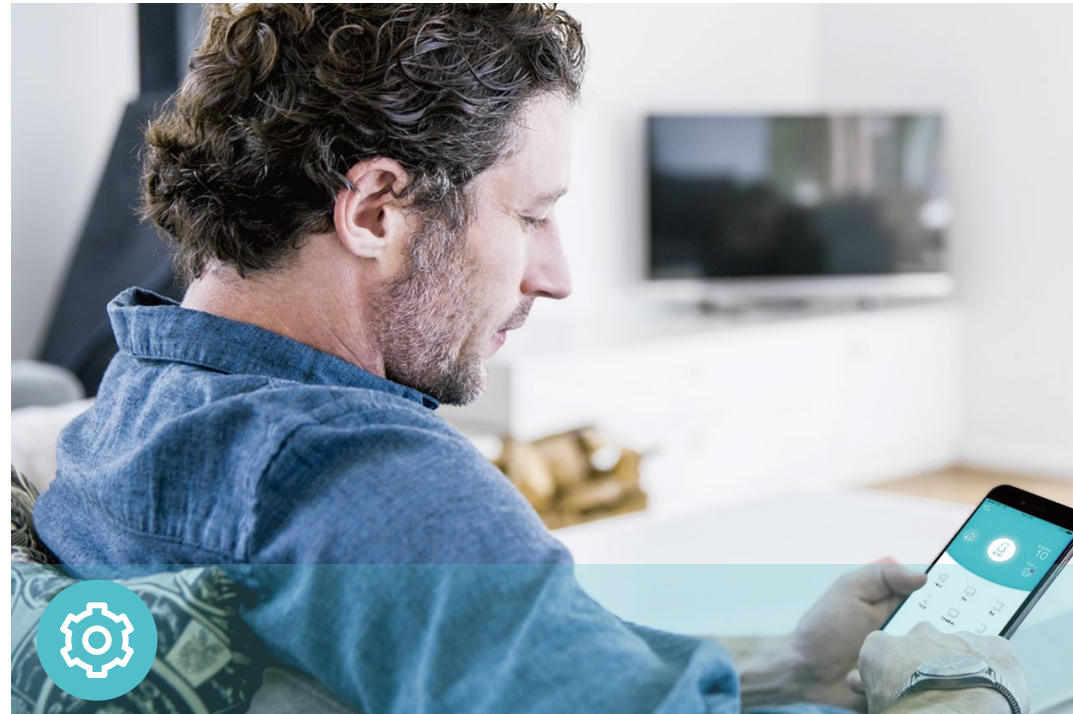


Vast Wi-Fi Coverage

Beamforming technology concentrates the Archer A6's Wi-Fi towards devices to create stronger connections. 4 external antennas and 1 internal antenna deliver Wi-Fi to every corner of your home.



Features



Ease of Use

- Intuitive Web UI – Ensure quick and simple installation without hassle
- Hassle-free Management with Tether App – Let you easily manage your network settings with your smartphone
- Fast Encryption – Quickly connect devices to Wi-Fi at the push of a button without entering the password
- Access Point Mode – Switch to access point mode to connect Wi-Fi devices to any wired network



Reliability

- Ultimate Wireless Speed – 450Mbps Wi-Fi speed on 2.4GHz and 867Mbps Wi-Fi speed on 5GHz meet your daily internet needs
- MU-MIMO – Simultaneously transfer data to multiple devices for 2× faster
- Support 802.11 ac – Provide a data transfer rate 3 times faster than 802.11n for each stream
- IPTV – Support IGMP Proxy/Snooping, Bridge and Tag VLAN to optimize IPTV streaming



Security

- Active Defense – Protect your home network with firewalls and wireless encryption
- Guest Network – Provide separate access for guests while securing the home network
- Access Control – Establish a whitelist or blacklist to allow or block certain devices from accessing the internet
- Parental Controls – Manage when and how connected devices can access the internet
- Secure VPN Access – Provide a private network with a safe and secure OpenVPN and PPTP VPN connection

Specifications

Hardware

- Ethernet Ports: 4*10/100/1000Mbps LAN Ports, 1*10/100/1000Mbps WAN Port
- Buttons: Reset Button, Power On/Off Button, WPS/Wi-Fi On/Off Button
- Antennas: 4 External Antennas and 1 Internal Antenna
- External Power Supply: 12V/1A
- Dimensions (W x D x H): 9.1 × 5.7 × 1.4 in (230 × 144 × 35 mm)

Software

- WAN Type: Dynamic IP, Static IP, PPPoE, PPTP (Dual Access), L2TP (Dual Access), BigPond
- DHCP: Server, DHCP Client List, Address Reservation
- Port Forwarding: Virtual Server, Port Triggering, UPnP, DMZ
- Dynamic DNS: DynDns, NO-IP
- VPN Server: PPTP VPN, OpenVPN
- Access Control: Parental Controls, Local Management Control, Host List, White List, Black List
- Firewall Security: DoS, SPI Firewall, IP and MAC Address Binding
- Protocols: IPv4, IPv6
- Management: Access Control, Local Management, Remote Management
- Guest Network: 2.4GHz Guest Network, 5GHz Guest Network

Wireless

- Wireless Standards: IEEE 802.11ac/n/a 5GHz, IEEE 802.11b/g/n 2.4GHz
- Frequency: 2.4GHz and 5GHz
- Signal Rate:
 - 5GHz: Up to 867Mbps
 - 2.4GHz: Up to 450Mbps
- Transmit Power:
 - CE EIRP: <20dBm(2.4GHz); <23dBm(5GHz)
- Reception Sensitivity:
 - 5GHz:
 - 11a 6Mbps:-93dBm; 11a 54Mbps:-78dBm;
 - 11ac HT20 mcs8:-69dBm;11ac HT40 mcs9:-65dBm;
 - 11ac HT80 mcs9:-62dBm;
 - 2.4GHz:
 - 11g 54Mbps:-78dBm;
 - 11n HT20 mcs7:-74dBm;
 - 11n HT40 mcs7:-71dbm;
- Wireless Function: Enable/Disable Wireless Radio, WDS Bridge, WMM, Wireless Statistics
- Wireless Security: 64/128-bit WEP,WPA / WPA2,WPA-PSK/ WPA2-PSK encryption

Specifications

Others

· Package Contents

Wireless Router Archer A6
Power Adapter
RJ45 Ethernet Cable
Quick Installation Guide

· Certification

CE, RoHS

· Environment

Operating Temperature: 0°C~40°C (32°F ~104°F)
Storage Temperature: -40°C~70°C (-40°F ~158°F)
Operating Humidity: 10%~90% non-condensing
Storage Humidity: 5%~90% non-condensing

· System Requirements

Microsoft Windows 10/8.1/8/7/Vista/XP/2000/NT/98SE, MAC OS, NetWare, UNIX or Linux
Internet Explorer 11, Firefox 12.0, Chrome 20.0, Safari 4.0, or other Java-enabled browser
Cable or DSL Modem
Subscription with an internet service provider (for internet access)

· Download TP-Link Tether App



For more information, please visit

<https://www.tp-link.com/ru/products/details/Archer-A6.html>

or scan the QR code left

Specifications are subject to change without notice. TP-Link is a registered trademark of TP-Link Technologies Co., Ltd. Other brands and product names are trademarks or registered trademarks of their respective holders. No part of the specifications may be reproduced in any form or by any means or used to make any derivative such as translation, transformation, or adaptation without permission from TP-Link Technologies Co., Ltd. Copyright ©2019 TP-Link Technologies Co., Ltd. All rights reserved.

*Maximum wireless signal rates are the physical rates derived from IEEE Standard 802.11 specifications. Actual wireless data throughput and wireless coverage are not guaranteed and will vary as a result of network conditions, client limitations, and environmental factors, including building materials, obstacles, volume and density of traffic, and client location.

*Use of MU-MIMO requires clients to also support MU-MIMO.

www.tp-link.com

TP-Link AC1200 Wi-Fi Router Full Gigabit | Dual Band Archer A6